

FIXTURE SPECIFICATION

Product Code : BD-F1

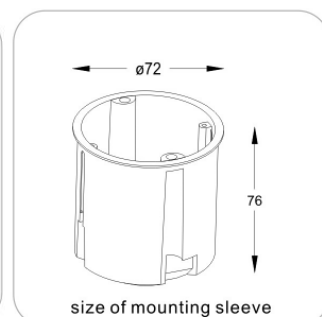
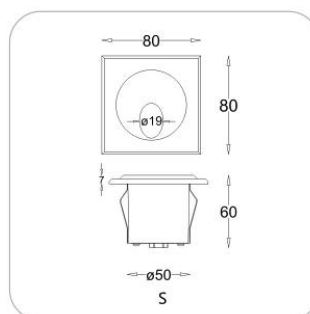
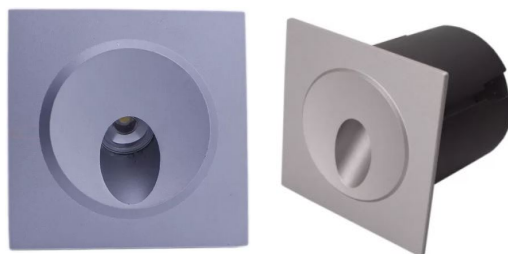
Description :

- ADC12 cast aluminium alloy body and components
- High performance anodized spun aluminum
- External screws are in stainless steel with protection dipping

Dimension : Dia. 80x80 mm. H: 60 mm.

IP Rating : IP 65

color : White /Black /Silver /Dark Grey



LAMP SPECIFICATION

Watt	3W LED
Lumen	117 lumen
Color Temperature	3000K,4000K,6000K
Accessories	LED Driver 24Vdc