

FIXTURE SPECIFICATION

Product Code : DOCK

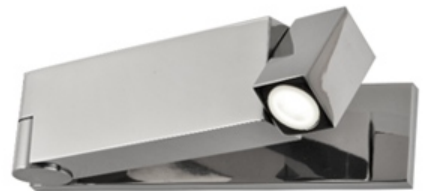
Description :

- High-pressure die cast aluminium alloy body and components
- Impact resistant safety tempered glass cover.
- High performance anodized spun aluminum
- Built-In On-Off switch

Dimension : Dia. 200x210 mm. H: 50 mm.

IP Rating : IP 20

color : Black & Chrome



LAMP SPECIFICATION

Watt	3W Cree LED
Lumen	120 lumen /CRI80
Beam Angle	30°
Color Temperature	3000K
Accessories	Built-In Switch & Driver